



*Azailya*







# A DYNAMIC COMMUNITY DESIGNED FOR YOUR CONVENIENCE

---

A multi-generation destination with green landscape and outdoor activates all around you. It is the ultimate suburban experience with no compromise.







# LOCATION & CONNECTIVITY

Strategically located between two of Cairo's main through-ways, The Cairo Suez Road and the Cairo Ismailia Road, SODIC EAST is directly adjacent to Al Sherouk City, and in close proximity to the New Administrative Capital, as well as being easily connected to downtown Cairo, and just a few minutes drive from Cairo's new Regional Ring Road.





# AN INTRICATE MASTERPLAN

Over the past two decades, urban dwellers have progressively been escaping downtown and moving towards suburban areas, trading convenience and connectivity for a healthier and more relaxed lifestyle. Planned over an impressive 655 acres of landscaped gardens, innovative homes, efficient connections and an abundance of amenities and services, SODIC EAST's master plan is designated to optimize the living experience for both the individual and the group.

- NEIGHBOURHOOD SERVICES
- FAMILY CLINIC COMPLEX
- TRANSPORTATION HUB
- EDUTAINMENT/ADVENTURE
- ACADEMIC HUB
- GREEN SPINE
- SOCIAL AND SPORTS CLUB
- ORGANIC FARM
- MOSQUE
- OPEN AIR FOUNDATION
- SOCIAL NODES
- FACILITY MANAGEMENT
- CITY HALL
- EMARAT MISR GAS STATION





SODIC EAST LIFE





# A NEW BEGINNING

SODIC EAST is home to a community that serves as a multi-generation destination for families, combining effective education, recreation & leisure facilities for a complete lifestyle.

Whether its your first home, first day of school or first day of swimming practice, a new beginning is always around the corner in SODIC EAST.





# A SPORTS CLUB AT YOUR SERVICE

---

The Sports Club is full of fitness and sports activities for residents of all ages. From an Olympic track, football field, to tennis, squash, basketball, volleyball, and handball courts, the Sports Club caters to homeowners with state-of-the-art sports facilities.

The Sports Club serves as the perfect to-go venue for all family activities, sports, events, and ceremonies.





# GREEN SPACES & FAMILY PARK

Homeowners do not just have a place to live in; the verdant greenery and landscape surrounding the community provide the perfect environment for a healthy and active lifestyle, empowering you into a life of energy and efficiency. From open spaces with outdoor gyms and activities to the region's first adventure park featuring an array of outdoor pursuits that celebrate the outdoors, there is never a dull moment in SODIC EAST.



A woman in a blue and white striped shirt is holding the hand of a young girl. The girl is wearing a yellow top and a blue and pink plaid backpack. They are walking outdoors, with a blurred green background. The text "DISTINGUISHED EDUCATION" is overlaid on the right side of the image.

# DISTINGUISHED EDUCATION

SODIC EAST is set to be home to an international esteemed school. Residents can bask in the comfort that their children are close and safe. Walking or cycling to school will become a way of life.



A close-up photograph of an agave plant, showing several long, pointed green leaves with prominent central veins. A small, light-colored flower bud is visible in the center-right of the frame. The background is a soft, out-of-focus light gray. The word "Azailya" is written in a stylized, orange-red font on the left side of the image.

*Azailya*





# SLEEK CONTEMPORARY ARCHITECTURE

---

Clean lines, roof top terraces accented by pergolas and an avante-garde contemporary outlook, set the ambiance for a modernist aesthetic.

With a strong sense of connectivity between indoor and outdoor spaces facilitated by the pergolas and covered terraces, the experience at Azailya is designed invigorate the heart and soul.





# NATURALLY INSPIRED

---

In Azailya, life is the very image of serene synergy between people and places. SODIC EAST delivers a miniature ecosystem of fine living striving on beauty and efficiency and allowing for the unbound joy of nature in all seasons. Azailya uniquely presents a community that celebrates the outdoors and finds joy and inspiration from nature.







# ROOM TO GROW

---

Through many of SODIC facilities, residents and their families find development and growth easy to attain. Azailya considers the current generation in the community as well as the following ones, creating a society where homeowners can rest assured that their families will have a promising future ahead.





Disclaimer: The interior shot is only an indicative theme.

# INTERIORS DESIGNED FOR LIFE

---

The homes in Azailya have been meticulously designed to facilitate life. Intelligent use of space and the interaction between indoor and outdoor areas make for a very alluring living experience.



# VERSATILE INTERIOR SPACES



Disclaimer: The interior shot is only an indicative theme.





# FLOORPLANS



# BUILDING 1A





**BUILDING 1A**  
Ground Floor



Type 2

Unit Number	01	02	03	04
Unit Type	2 BED	2 BED	3 BED	3 BED
Gross Area	123	124	160	150

Type 1

Unit Number	01	02	03	04
Unit Type	3 BED	3 BED+N	2 BED	2 BED
Gross Area	162	181	120	123

**BUILDING 1A**  
First Floor



Type 2

Unit Number	11	12	13	14
Unit Type	2 BED+N	2 BED+N	3 BED	3 BED
Gross Area	140	140	162	158

Type 1

Unit Number	11	12	13	14
Unit Type	3 BED+N	3 BED+N	2 BED	2 BED
Gross Area	179	182	121	120



**BUILDING 1A**  
Second Floor



Type 2

Unit Number	21	22	23	24
Unit Type	2 BED+N	2 BED+N	3 BED	3 BED
Gross Area	139	140	158	158

Type 1

Unit Number	21	22	23	24
Unit Type	3 BED+N	3 BED+N	2 BED	2 BED
Gross Area	180	180	122	122

**BUILDING 1A**  
Third Floor



Type 2

Unit Number	31	32	33	34
Unit Type	2 BED+N	2 BED+N	3 BED	3 BED
Gross Area	139	140	160	161

Type 1

Unit Number	31	32	33	34
Unit Type	3 BED+N	3 BED+N	2 BED	2 BED
Gross Area	181	181	121	121



# BUILDING 1A

Fourth Floor

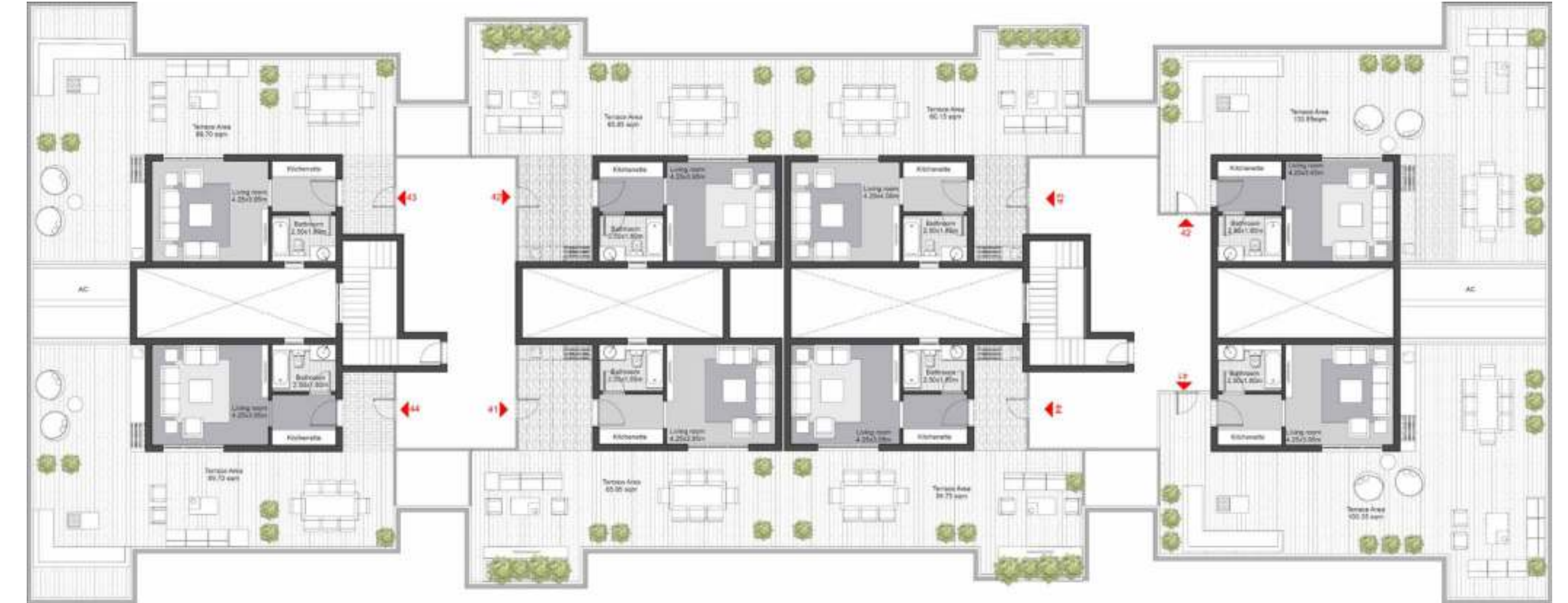


Type 2	41	42	43	44
Unit Number	41	42	43	44
Unit Type	2 BED+N+R	2 BED+N+R	3 BED+R	3 BED+R
Gross Area	139	140	161	161

Type 1	41	42	43	44
Unit Number	41	42	43	44
Unit Type	3 BED+N+R	3 BED+N+R	2 BED+R	2 BED+R
Gross Area	178	177	120	120

# BUILDING 1A

Roof



Type 2	41	42	43	44
Unit Number	41	42	43	44
Unit Type	2 BED+N+R	2 BED+N+R	3 BED+R	3 BED+R
Roof Area	36	36	38	38
Total Gross Area	175	176	199	199

Type 1	41	42	43	44
Unit Number	41	42	43	44
Unit Type	3 BED+N+R	3 BED+N+R	2 BED+R	2 BED+R
Roof Area	37	37	38	38
Total Gross Area	215	214	158	158



# BUILDING 1B





# BUILDING 1B

Ground Floor



## Type 4

Unit Number	01	02	03	04
Unit Type	2 BED	2 BED	3 BED	3 BED
Gross Area	125	125	158	149

## Type 3

Unit Number	01	02	03	04
Unit Type	3 BED	3 BED+N	2 BED	2 BED
Gross Area	160	179	119	119

# BUILDING 1B

First Floor



## Type 4

Unit Number	11	12	13	14
Unit Type	2 BED+N	2 BED+N	3 BED	3 BED
Gross Area	142	142	161	160

## Type 3

Unit Number	11	12	13	14
Unit Type	3 BED+N	3 BED+N	2 BED	2 BED
Gross Area	180	182	122	122



# BUILDING 1B

Second Floor



## Type 4

Unit Number	21	22	23	24
Unit Type	2 BED+N	2 BED+N	3 BED	3 BED
Gross Area	139	139	162	162

## Type 3

Unit Number	21	22	23	24
Unit Type	3 BED+N	3 BED+N	2 BED	2 BED
Gross Area	182	182	122	122

# BUILDING 1B

Third Floor



## Type 4

Unit Number	31	32	33	34
Unit Type	2 BED+N	2 BED+N	3 BED	3 BED
Gross Area	142	142	161	161

## Type 3

Unit Number	31	32	33	34
Unit Type	3 BED+N	3 BED+N	2 BED	2 BED
Gross Area	182	182	122	122



# BUILDING 1B

Fourth Floor

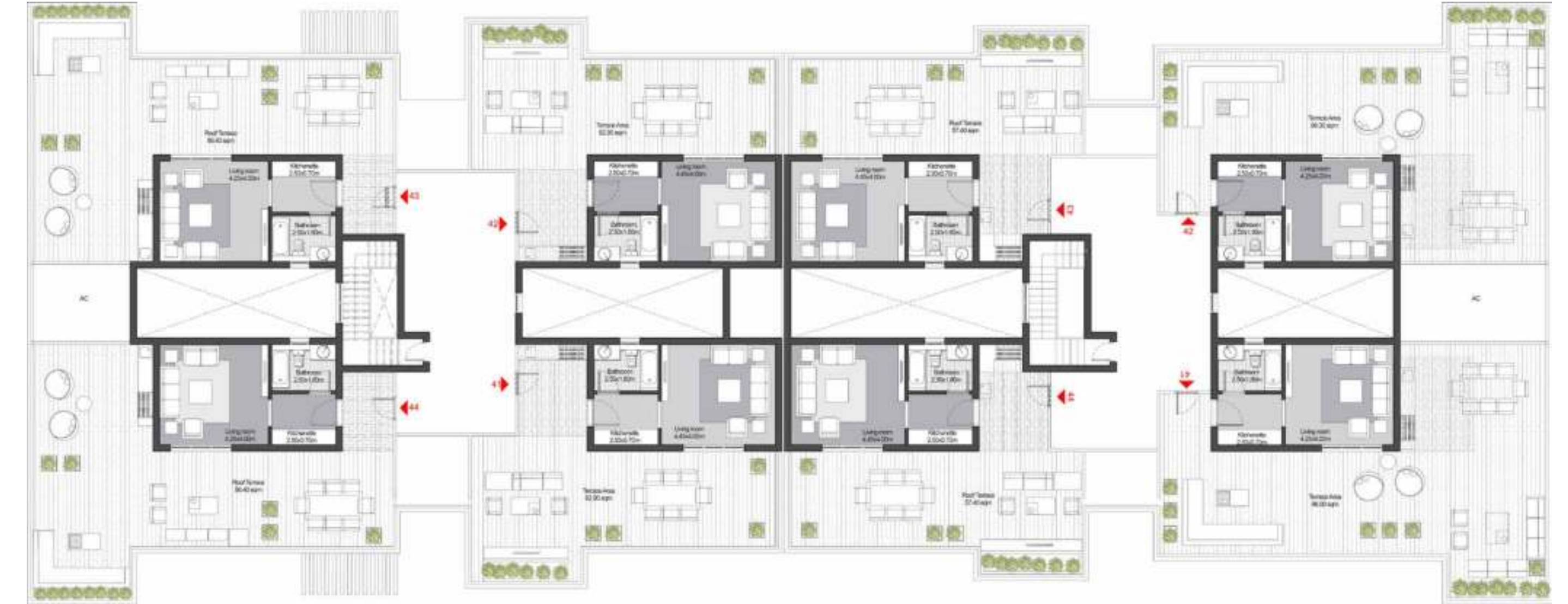


Type 4	41	42	43	44
Unit Number	41	42	43	44
Unit Type	2 BED+N+R	2 BED+N+R	3 BED+R	3 BED+R
Gross Area	140	140	158	158

Type 3	41	42	43	44
Unit Number	41	42	43	44
Unit Type	3 BED+N+R	3 BED+N+R	2BED+R	2BED+R
Gross Area	180	180	120	120

# BUILDING 1B

Roof



Type 4	41	42	43	44
Unit Number	41	42	43	44
Unit Type	2 BED+N+R	2 BED+N+R	3 BED+R	3 BED+R
Roof Area	38	38	37	37
Total Gross Area	178	178	195	195

Type 3	41	42	43	44
Unit Number	41	42	43	44
Unit Type	3 BED+N+R	3 BED+N+R	2 BED+R	2 BED+R
Roof Area	37	37	38	38
Total Gross Area	217	217	158	158



# BUILDING 2





## BUILDING 2

Ground Floor



### Type 6

Unit Number	01	02	03	04
Unit Type	2 BED+N	2 BED+N	3 BED+N	3 BED+N
Gross Area	142	143	178	178

### Type 5

Unit Number	01	02	03	04
Unit Type	3 BED+N+L	3 BED+N+L	2 BED+N	2 BED+N
Gross Area	208	208	141	140

## BUILDING 2

First Floor



### Type 6

Unit Number	11	12	13	14
Unit Type	3 BED	3 BED	3 BED+N	3 BED+N
Gross Area	165	165	181	181

### Type 5

Unit Number	11	12	13	14
Unit Type	3 BED+N+L	3 BED+N+L	3 BED	3 BED
Gross Area	213	213	163	164



**BUILDING 2**  
Second Floor



Type 6

Unit Number	21	22	23	24
Unit Type	3 BED	3 BED	3 BED+N	3 BED+N
Gross Area	163	163	181	181

Type 5

Unit Number	21	22	23	24
Unit Type	3 BED+N+L	3 BED+N+L	3 BED	3 BED
Gross Area	215	214	163	164

**BUILDING 2**  
Third Floor



Type 6

Unit Number	31	32	33	34
Unit Type	3 BED	3 BED	3 BED+N	3 BED+N
Gross Area	165	165	182	182

Type 5

Unit Number	31	32	33	34
Unit Type	3 BED+N+L	3 BED+N+L	3 BED	3 BED
Gross Area	214	215	165	165



**BUILDING 2**  
Fourth Floor



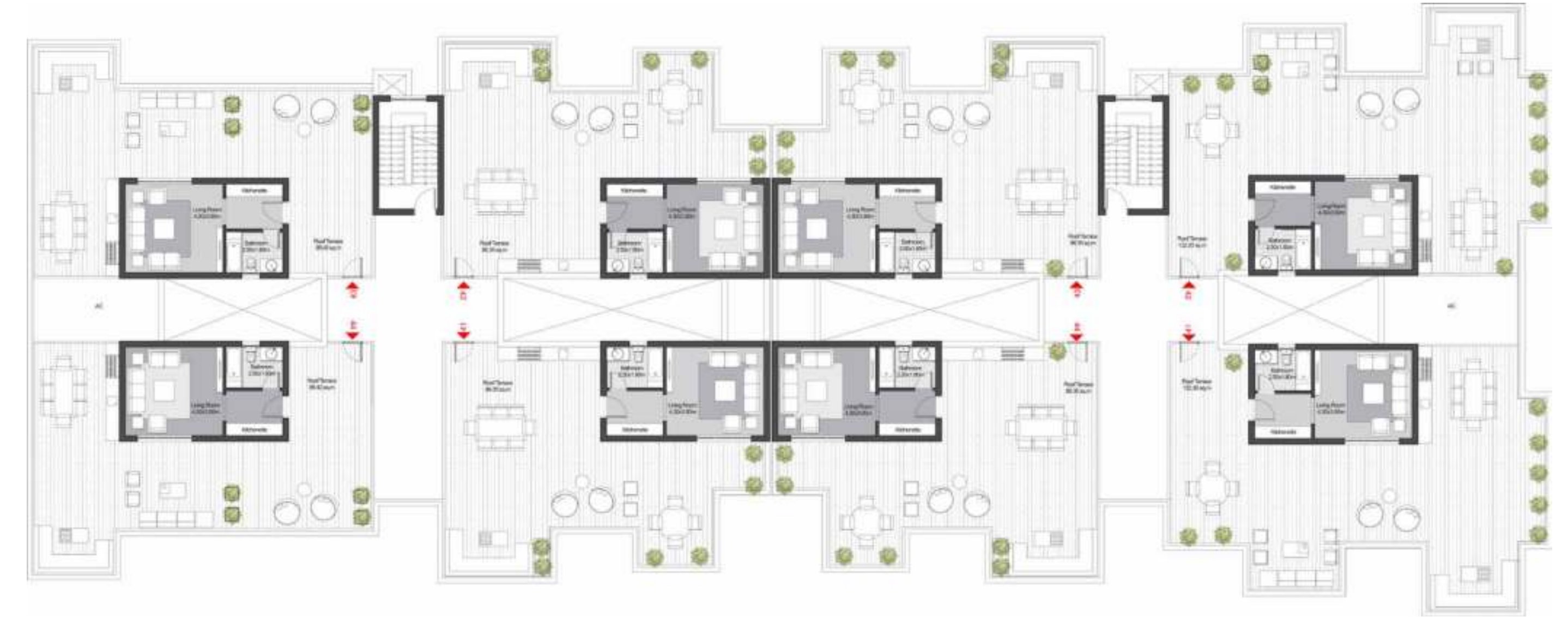
Type 6

Unit Number	41	42	43	44
Unit Type	3 BED+R	3 BED+R	3 BED+N+R	3 BED+N+R
Gross Area	161	161	179	179

Type 5

Unit Number	41	42	43	44
Unit Type	3 BED+N+L+R	3 BED+N+L+R	3 BED+R	3 BED+R
Gross Area	214	213	164	164

**BUILDING 2**  
Roof



Type 6

Unit Number	41	42	43	44
Unit Type	3 BED+R	3 BED+R	3 BED+N+R	3 BED+N+R
Roof Area	37	37	37	37
Total Gross Area	198	198	216	216

Type 5

Unit Number	41	42	43	44
Unit Type	3 BED+N+L+R	3 BED+N+L+R	3 BED+R	3 BED+R
Roof Area	36	36	36	36
Total Gross Area	250	249	200	200



# WALK-THROUGH





# WALK-THROUGH

Ground Floor



## Type 8

Unit Number	01	02	03	04
Unit Type	2 BED	2 BED	3 BED+N	3 BED+N
Gross Area	117	117	179	179

## Type 7

Unit Number	01	02	03	04
Unit Type	3 BED+N+L	3 BED+N+L	2 BED	2 BED
Gross Area	209	209	116	116

# WALK-THROUGH

First Floor



## Type 8

Unit Number	11	12	13	14
Unit Type	2 BED	2 BED	3 BED+N	3 BED+N
Gross Area	135	135	181	181

## Type 7

Unit Number	11	12	13	14
Unit Type	3 BED+N+L	3 BED+N+L	2 BED	2 BED
Gross Area	214	214	134	134



# WALK-THROUGH

Second Floor



Unit Number	21	22	23	24
Unit Type	3 BED	3 BED	3 BED+N	3 BED+N
Gross Area	166	166	181	181

Unit Number	21	22	23	24
Unit Type	3 BED+N+L	3 BED+N+L	3 BED	3 BED
Gross Area	215	215	167	167

# WALK-THROUGH

Third Floor



Unit Number	31	32	33	34
Unit Type	3 BED	3 BED	3 BED+N	3 BED+N
Gross Area	166	166	183	183

Unit Number	31	32	33	34
Unit Type	3 BED+N+L	3 BED+N+L	3 BED	3 BED
Gross Area	214	214	164	164



# WALK-THROUGH

Fourth Floor



Type 8

Unit Number	41	42	43	44
Unit Type	3 BED+R	3 BED+R	3 BED+N+R	3 BED+N+R
Gross Area	167	167	180	180

Type 7

Unit Number	41	42	43	44
Unit Type	3 BED+N+L+R	3 BED+N+L+R	3 BED+R	3 BED+R
Gross Area	213	213	167	167

# WALK-THROUGH

Roof



Type 8

Unit Number	41	42	43	44
Unit Type	3 BED+R	3 BED+R	3 BED+N+R	3 BED+N+R
Roof Area	37	37	37	37
Total Gross Area	204	204	217	217

Type 7

Unit Number	41	42	43	44
Unit Type	3 BED+N+L+R	3 BED+N+L+R	3 BED+R	3 BED+R
Roof Area	37	37	37	37
Total Gross Area	250	250	204	204



# STANDALONE





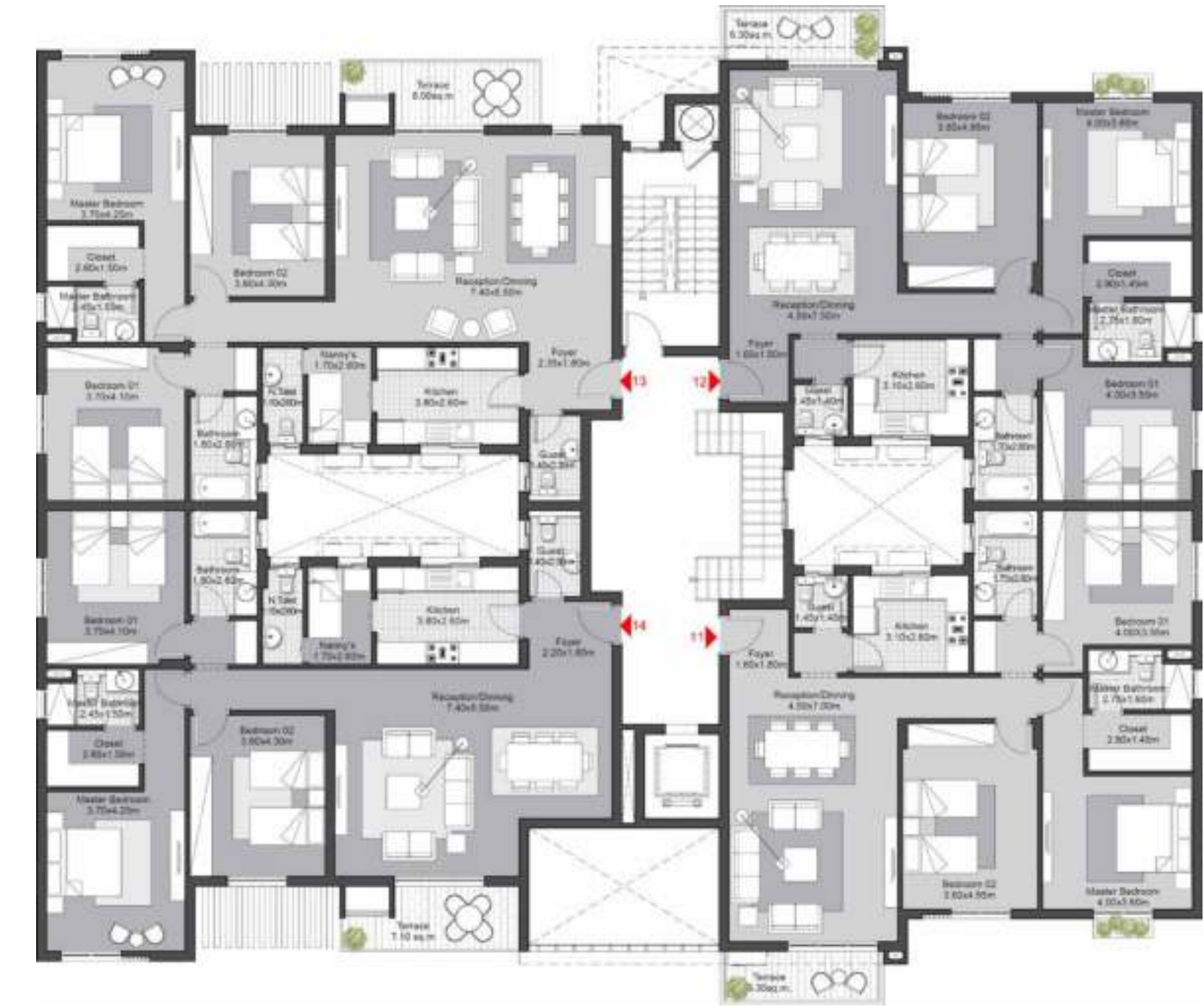
STANDALONE  
Ground Floor



Type 9

Unit Number	01	02	03	04
Unit Type	3 BED	3 BED	3 BED	3 BED
Gross Area	155	155	160	159

STANDALONE  
First Floor



Type 9

Unit Number	11	12	13	14
Unit Type	3 BED	3 BED	3 BED+N	3 BED+N
Gross Area	156	156	183	178



STANDALONE  
Second Floor



Type 9

Unit Number	21	22	23	24
Unit Type	3 BED	3 BED	3 BED+N	3 BED+N
Gross Area	160	160	183	183

STANDALONE  
Third Floor



Type 9

Unit Number	31	32	33	34
Unit Type	3 BED	3 BED	3 BED+N	3 BED+N
Gross Area	161	161	179	179



# STANDALONE

Fourth Floor



Type 9

Unit Number	41	42	43	44
Unit Type	3 BED+R	3 BED+R	3 BED+N+R	3 BED+N+R
Gross Area	160	160	177	177

# STANDALONE

Roof



Type 9

Unit Number	41	42	43	44
Unit Type	3 BED+R	3 BED+R	3 BED+N+R	3 BED+N+R
Roof Area	37	37	37	37
Total Gross Area	197	197	214	214





# THE JOINT VENTURE



Heliopolis Housing & Development Company is the oldest real estate investment company in the Middle East. Its main mission is to work effectively in the realization of urban development projects, and the utilization of its largest land area in the Middle East. The company is also keen to provide outstanding products that can compete and excel in this field.

SODIC and Heliopolis Housing & Developing Company signed the co-development contract for 655 acres of land in New Heliopolis, East Cairo, with the purpose of increasing its land bank and pursuing new opportunities for growth. This partnership marks the beginning of a growth strategy for SODIC, one that is expected to create over 40,000 direct & indirect jobs over the course of its development in areas of retail, medical, education, sports facilities, as well as residential.





Contact us at **16220**  
Or international calls via **+20238540185**  
Visit our website: **sodiceast.com**  
For sales and customer services, please email: **sales@sodic.com**  
For general information and inquiries, please email: **info@sodic.com**

Or simply drop by one of our SODIC Sales Centres, which are located at:  
**Sheikh Zayed:** Km 38 Cairo-Alexandria  
**Desert Road Heliopolis:** 46 El-Thawra Street.

**Disclaimer:**

- Diagrams are not to scale and are for illustrative purposes.
- SODIC reserves the right to make minor alterations.
- All rendering and other visual materials, designs, facades are for illustrative purposes only and are subject to change.
- SODIC reserves the right to use different finishing elements and sanitary fixtures models from those which are shown in renders and specification sheets.
- Final models used in our finishing are similar and subject to market and availability at the time of operations.
- This brochure contains material, which is owned by or licensed to SODIC. This material includes, but not limited to, the design, layout, look, appearance and graphics. Reproduction is prohibited.
- Room measurements are consistent with face of wall to face of wall dimensions and do not include wall finishes or additional construction.
- All finishes, furniture, fences and mill-work shown in the accompanying renderings are for illustrative purposes only; refer to the sales contract annex for exact finishing specifications.
- Please refer to master-plan for adjacent buildings.
- All landscaping visuals are for illustrative purposes only and are not included in the property.









[sodiceast.com](http://sodiceast.com)